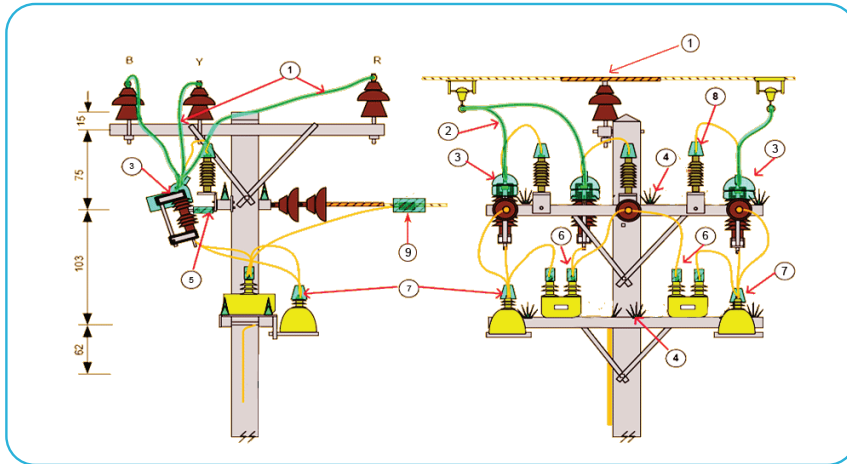


## LIVE PART COVER / WILDLIFE PROTECTORS



1. Cable Guard
2. Insulating Hose
3. Fuse Cutout Cover
4. Bird Protector Device
5. Insulating Tape
6. Bushing CT Cover
7. Bushing VT Cover
8. Surge Arrester Bird Cap
9. PG Clamp Cover

### Typical Live Parts Cover / Wildlife Protector Installation in Distribution Lines

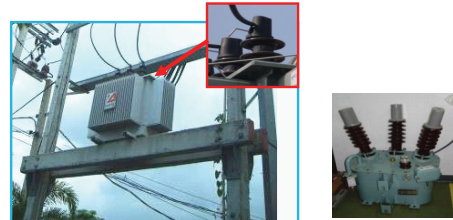
#### Benefits :

- Protect and prolong useful life of equipments in distribution lines and substation
- Minimizes power outages and maintenance in the distribution systems due to environmental risks
- Durable, economical, easy to install and long life expectancy

### Transformer Bushing Cover

The transformer bushing cover used for protection electrical short circuit from animal contacts between live parts of energized equipments. The cover is suitable for bushing terminals of transformer, capacitor, circuit breaker, etc. also used in distribution lines up to 36 kV.

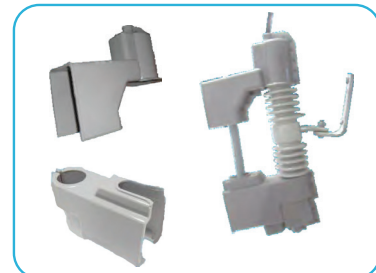
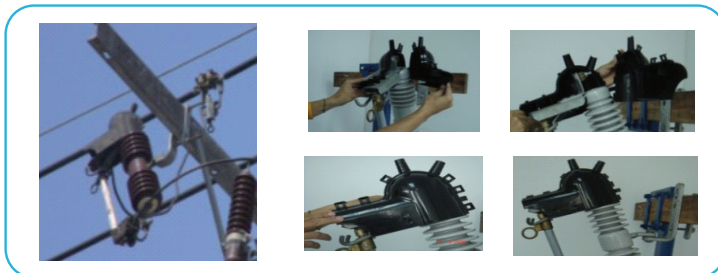
ใช้ในการครอบป้องกัน Bushing Insulator ของหม้อแปลงที่ติดตั้งในระบบไฟฟ้า



### Fuse Cutout Cover

The drop out fuse cover (fuse cutout cover) used for protection the short circuit from animal contacts between live parts of energized equipments. The drop out fuse cover is suitable for distribution lines up to 36 kV and could be covered on the upper and lower parts of fuse cutout that already installed in distribution systems or new equipment.

ใช้ในการครอบส่วน Live part ด้านบนของ Fuse Cutout เพื่อป้องกันสัตว์

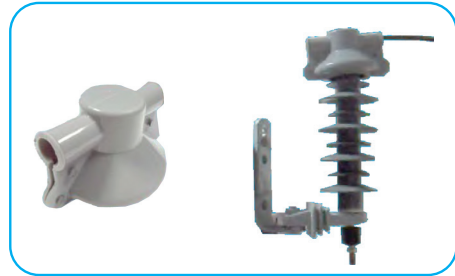


# LIVE PART COVER / WILDLIFE PROTECTORS

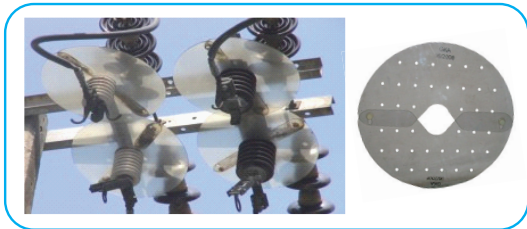
## Lightning Arrester Cover

The lightning arrester (surge arrester) cover used for protection the short circuit from animal contacts between live parts of energized equipments. The lightning arrester cover is suitable for distribution lines upto 36 kV and could be covered on the arrester that already installed in distribution systems or new arrester.

ใช้ในการครอบป้องกัน ด้านบนของอุปกรณ์ล่อฟ้า



## Disconnecting Switch Barrier / Animal Guard



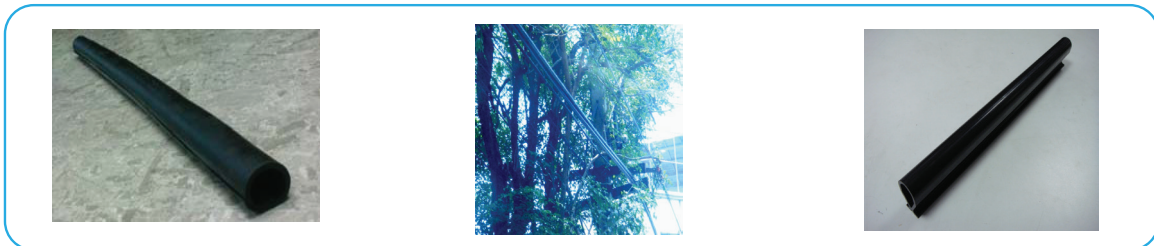
The Disconnecting Switch Barrier is designed in round disc to block animals from contacting between phases and/or ground of switches installed in substations or line. The barrier is made of polycarbonate transparent sheet which have high voltage withstand properties. The barrier can left in place for long time without changing or replaced. Other shapes of barrier with different plastic materials are also available upon customer's specific request.

อุปกรณ์ป้องกันสัตว์สัมผัส ดิสคอนเน็คติ่งสวิตช์

## Cable Guard

The Cable Guard is designed to protect conductor from abrasion and contact by tree limbs and animals. It is extruded from track resistant HDPE and can be clipped easily onto the conductors. The Cable Guard shall be supplied in black color with standard length 5ft, other lengths are available upon customer's specific request.

อุปกรณ์ป้องกันต้นไม้เสียดสีกับสายเคเบิล



## Secondary Fuse Cover



The Secondary Fuse Cover is designed to insulated the live parts of secondary fuses installed in the lines. It is molded from high strength clear plastic equipped with stainless steel lock to secure it's in place. The cover can be left in place for long time without changing properties.

อุปกรณ์ป้องกัน Secondary Fuse

## Bird Protector Device

The Cable Guard is designed to protect conductor from abrasion and contact by tree limbs and animals. It is extruded from track resistant HDPE and can be clipped easily onto the conductors. The Cable Guard shall be supplied in black color with standard length 5ft, other lengths are available upon customer's specific request.

อุปกรณ์ป้องกันนก



**LIVE PART COVER / WILDLIFE PROTECTORS**

**Specification**

Picture	Product	Model	Dimension (mm)			Price / ราคา
			W	L	T	
	Bushing Cover (PEA's Spec)	HVB-01	110	115	135	<b>1,000.00</b>
	Bushing Cover (MEA's Spec)	HVB-02	110	115	151	<b>1,000.00</b>
	Bushing Cover (Silicone Type)	HVB-05	132	115	151	<b>1,500.00</b>
	Bushing Cover (Extended lug cover)	TMB-01	170	165	172	<b>1,700.00</b>
	Fuse Cutout Cover	CC-272	112	240	150	<b>1,500.00</b>
	Fuse Cutout Cover (Upper part)	DFC-U-1	108	286	214	<b>1,700.00</b>
	Fuse Cutout Cover (Lower part)	DFC-L-1	85	265	208	<b>1,700.00</b>
	Lightning Arrester Cover	LAC-01	120	165	87	<b>600.00</b>
	PG Clamp Cover	1-Bolt	71	85	1.5	<b>150.00</b>
		2-Bolt	72	88	1.5	<b>200.00</b>
	Secondary Fuse Cover (100A - 150A)	SFC-01	60	150	60	<b>600.00</b>

\* Dimension with Tolerance +/- 5%  
\*\* Other design is also available upon request

## LIVE PART COVER / WILDLIFE PROTECTORS

### Specification

Picture	Product	Model	Dimension (mm)			Price / ราคา
			W	L	T	
	Plastic Guard for Flat Brace	PGFB	33	500	65	<b>600.00</b>
	Plastic Cable Guard Standard size	PGC-70	33	1500	65	<b>1,150.00</b>
	Plastic Cable Guard Jumbo size	PGC-185	46	1500	88	<b>1,400.00</b>
	Conductor Cover	CC-38	48	1000	5	<b>1,500.00</b>
	Barrier (Animal Guard for Disconnecting SW.)	BDS-001	3	500	110	<b>3,000.00</b>
<b>อุปกรณ์ป้องกันนก</b>						
	Bird Protector (Spike Unit)	BPD-S	13	178	108	<b>200.00</b>
	Bird Protector (Base Rail) Prefabricated Bird Spike	BPD-BR	19 6.5	1,200 600	11.5 108	<b>800.00</b>
<b>อุปกรณ์ป้องกันงู</b>			<b>Dimension (inch)</b>			
	Snake Guard (Plastic Sheet)	LOC-440	27"	39"	0.006"	<b>50.00</b>
	Snake Guard (Net Type) (Al. Sheet)	LOC-2520 LOC-2859	<b>O.D.</b>			
			<b>Upper</b>	<b>Lower</b>		
			18"	29"		<b>500.00</b>
			กว้าง 40"			<b>500.00</b>

\* Dimension with Tolerance +/- 5%

\*\* Other design is also available upon request